

Viking Power 16

COMPACT SHOWER DRAIN, BILGE & WASTE WATER PUMP

Viking Power 16 is a single-chamber, self-priming diaphragm pump that can be set up in several different pump/motor configurations. It is easy to install anywhere after the drain outlet in the wastewater system or as a bilge pump in any leisure craft — new or used.



Its non-choke valves mean that no in-line filters are necessary, and the pump can not only be run dry, it can also handle a mixture of air and water without difficulty. The Viking Power 16 is self-priming up to a height of 3 m.

With its low pulse and muffled rubber bracket, this pump offers quiet operation. Specifically designed to pump wastewater, the Viking Power 16 has been built to last, and engineered for easy maintenance.

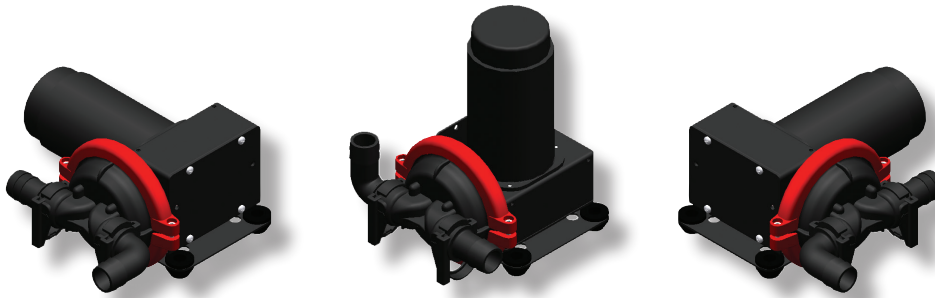
When it comes time to replace the premium grade reinforced nitrile rubber diaphragm, you can put in a spare without even removing the pump from the system. Delivered with 1" hose and 3/4" hose 1/2" BSP KlickTite™ XL connectors.

Features & Benefits

- Specifically designed to pump wastewater
- Easy to install, even in tight spaces
- Quiet operation
- Easy, low-cost maintenance
- High-impact glass-fiber reinforced nylon body
- Ball-bearing supported transmission
- Non-choke valves – no filters required
- Self-priming up to 3 meters (9.8 feet)
- Can be run dry and can pump air/water mixture
- Robust single diaphragm
- KlickTite™ XL connectors standard
- 12V or 24V motors
- Low power consumption
- Complies with ISO 15083 small craft bilge pump standard for vessels up to 12 m (39.4 ft)

Shower drain, bilge and waste water

Its non-choke valves mean that no in-line filters are necessary, and the pump can not only be run dry, it can also handle a mixture of air and water without difficulty. The Viking Power 16 is self-priming up to a height of 3 m.



Technical specifications and capacity data

Capacity	16 l/min (4.5 GPM) open flow (15 l/min at 0.1 bar)
Max. head	3 meters (9.8 feet)
Max. lift	3 meters (9.8 feet)
Max. head & lift	4 meters (13.1 feet)
Dimensions	186 mm long x 235/181 mm wide x 118/204 mm high
Connection	KlickTite™ XL connectors for 1" hose or 3/4" hose and 1/2" BSP threads; straight 90° available as extra accessory
Weight	2.6 kg (5.7 pounds)
Motor	2.3 amp (12V) 1.2 amp (24V) at 0.1 bar 12/24V DC (with built-in thermal protection)
Body	Nylon, glass-fiber reinforced
Valves	Nitrile rubber
Diaphragm	Nitrile rubber

ORDER NO.	DESCRIPTION
10-13350-03	VIKING POWER 16, 12 V
10-13350-04	VIKING POWER 16, 24 V